












**HMB HOMES**  
REAL ESTATE DEVELOPMENT

Your home - Your strength



-  About Us
-  Our Philosophy
-  Vision & Mission
-  Our Values
-  Our Services
-  Our Process
-  Strengths & Achievements
-  The HMB collection
-  Our Leadership







**HMB HOMES**  
REAL ESTATE DEVELOPMENT

# We are more than a Real Estate Developer — we create homes that empower

Our real estate journey began in 2016, sparked by a shared vision among friends:  
to create homes that nurture growth, offer lasting stability, and provide a true sense of belonging.

Today, nearly 10 years on, the same core belief continues to guide every project we undertake.



# We design homes that grow with you

We are rooted in UAE and are focused on crafting spaces with timeless design that not just meet but exceed global standards.

We deliver practical, thoughtfully designed homes that hold their value over time.

From concept to handover

Clear. Personal. Dependable







# Mission

To create homes that become sources of strength, confidence, and harmony for every individual while supporting the values of family and well-being.

HMB Homes designs residences not just as living spaces but as the foundation for personal development, strong family bonds, and ambitious achievements.

We understand that a home is where the journey to success and happiness begins, and our mission is to craft spaces that foster these aspirations.



# Vision

To become a leader in building homes that symbolize strength, harmony, personal growth and family values with luxury level hotels style of living.

We aim to be a symbol of reliability, stability, and inspiration in the real estate market.

HMB Homes is not just a company that constructs houses — it is a brand that helps people build their lives, providing the space for growth, success, and well-being.







# Dependability

We build with purpose and integrity.  
HMB Homes is reliable—ensuring quality construction and timely delivery,  
giving you the confidence to plan your future.

# Harmony

A home is more than a space; it's where strength, comfort, style, and functionality  
unite.  
Harmony in our homes is the balance of coziness, technology and an  
environment that supports well-being.

# Empowerment

A home should empower you to reach your full potential. It's more than just a place to  
live — it's a space that encourages growth, independence, and achievement.  
HMB Homes offers a foundation for empowerment, inspiring confidence and the  
freedom to thrive.

# Strength

A home is a foundation that supports and protects  
Strength isn't just about durability, but the energy that helps you overcome  
challenges.  
HMB Homes provides stability, confidence, and space to grow



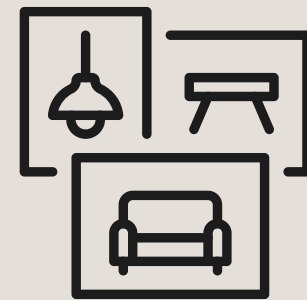


# Why HMB Homes ?



## **A Foundation for Your Dreams:**

Homes built to empower and inspire your success.



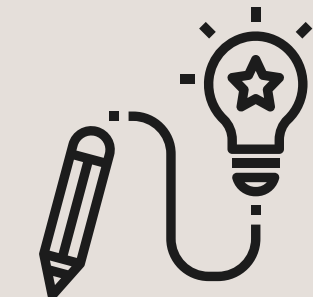
## **Where Comfort Meets Ambition:**

Perfect spaces that balance relaxation and achievement.



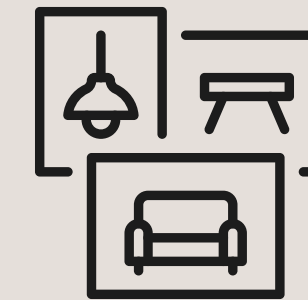
## **Built for Your Journey:**

Homes that support your growth and strength through life with luxury style amenities



## **Elegance That Inspires:**

Modern design and timeless beauty that uplift your lifestyle and inspire you



## **A Place to Grow:**

Homes designed for family and personal growth. From studio to luxury 3 bedroom.



## **Built with Integrity:**

We deliver quality homes on time, with no surprises.



## **Prime Locations:**

Convenient access to everything that matters.



**Ready-to-Use Kitchens and Bathrooms:** Move-in ready homes with everything you need to live comfortably.



**Smart Home:** Efficient use of space, light, and energy and all this from any of your devices.



## **Sustainable Living:**

Eco-friendly homes that save energy and costs.





# The HMB Collection

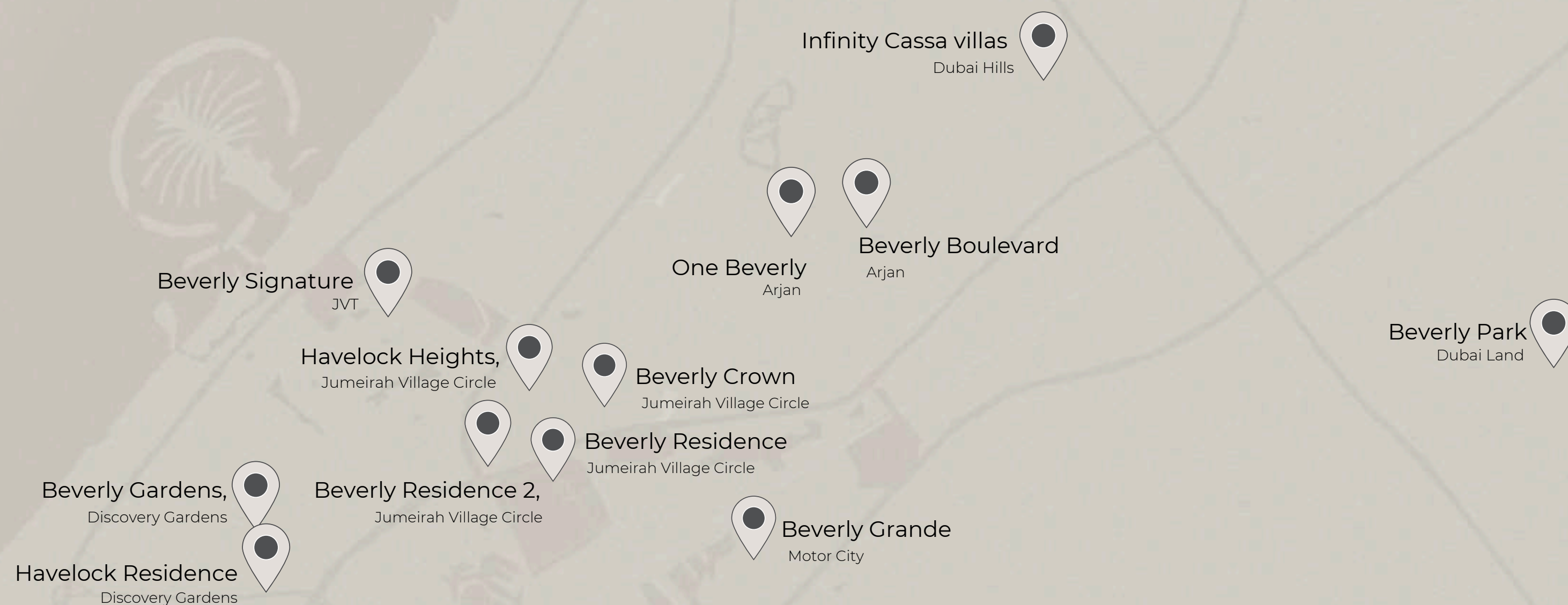


# OUR PROJECTS

*Our work speaks for itself. From blueprint to reality.*

Our developments span Dubai's key residential hubs, each one shaped with its own intent and community feel, each a starting point for a better everyday life.

- Beverly Residence, JVC
- Beverly Boulevard, Arjan
- Beverly Residence 2, JVC
- Beverly Gardens, Discovery Gardens
- One Beverly, Arjan
- Havelock Heights, JVC
- Beverly Grande, Motor City
- Havelock Residences, Discovery Gardens
- Beverly Park, Dubai Land
- Beverly Crown, JVC
- Infinity Cassa Villas, Dubai Hills
- Beverly Signature Villas, JVT





# Beverly Residence

Location: Jumeirah Village Circle, Dubai

Status: Completed

Number of Units: 195

## A FAMILY FOCUSED ESCAPE

Designed with everyday ease in mind, Beverly Residence blends a resort-style feel with practical city living. Nestled near the central park, this project offers open green spaces, essential amenities, and room to grow — perfect for families seeking balance.

## UNITS TYPES & SIZES

- Studios: 386.85 - 653.48 sq.ft.
- 1 Bedroom: 659.29 - 1,810.17 sq.ft
- 2 Bedroom: 1,336.55 - 1,416.42 sq.ft
- 3 Bedroom: 1,399.74 - 1,903.27 sq.ft





# Beverly Boulevard

Location: Arjan, Dubai

Status: Completed

Number of Units: 271

## SPACE TO LIVE WELL

This residence is all about spacious, sunlit interiors and the freedom of open plan layouts. Located for convenience and designed for flow.

It's a place where modern life feels less rushed and more in rhythm.

## UNITS TYPES & SIZES

- Studios: 375.34 - 464.57 sq.ft
- Executive studio: 533.78-538.84 sq.ft.
- 1 Bedroom: 609.97-1158.09 sq.ft
- 2 Bedroom: 1,109.11-1,392.63 sq.ft
- 2BHK with Private Pool: 1,276.38-1,280.47 sq.ft





# Beverly Residence 2

Location: Jumeirah Village Circle, Dubai  
Status: Under Construction  
Number of Units: 108

## WELLNESS BY DESIGN

This development is made for those who value peace of mind as much as functionality. From calming common areas to intuitive layouts, every inch is designed to foster balance — mentally, emotionally, and physically.

## UNITS TYPES & SIZES

- Studios: 386.85 - 467.69 sq.ft.
- 1 Bedroom: 601.59 - 1,095.98 sq.ft
- 1 Bedroom With Private Pool: 800 - 900 sqft
- 2 Bedroom: 1,267.77 - 1,848.81 sq.ft





# Beverly Gardens

Location: Discovery Gardens, Dubai

Status: Under Construction

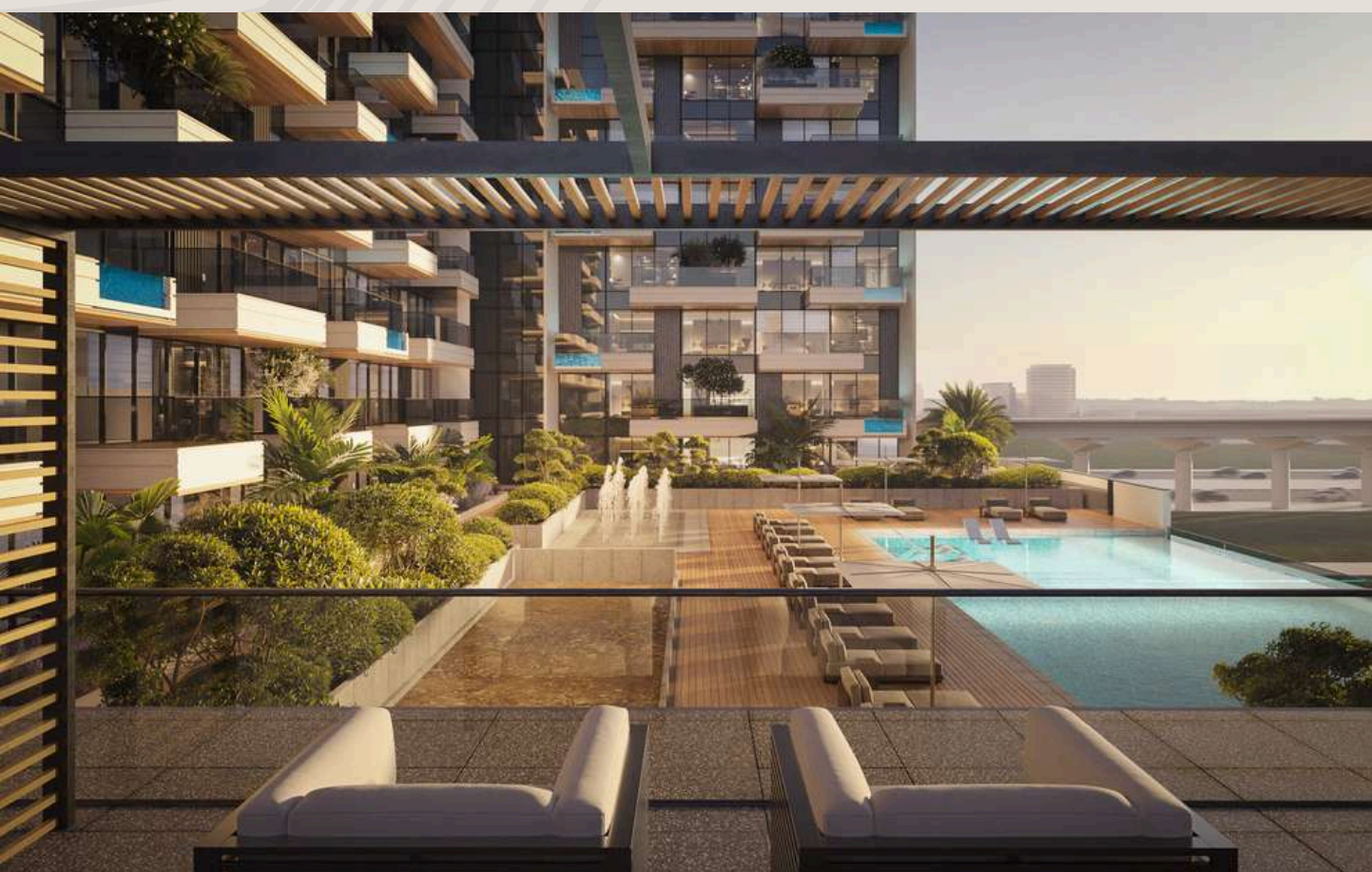
Number of Units: 220

## CONVENIENCE DONE WELL

Where quiet community meets connected living. Beverly Gardens places you at the centre of a peaceful, well-established neighbourhood while offering smooth access to the rest of the city. Simple, smart, and easy to settle into.

## UNITS TYPES & SIZES

- Studios: 460 sqft
- 1 Bedroom: 740 sqft
- 1 Bedroom with Private Pool: 900 sqft
- 2 Bedroom: 1,100 sqft
- 2 Bedroom with Private Pool: 1,200 sqft





# One Beverly

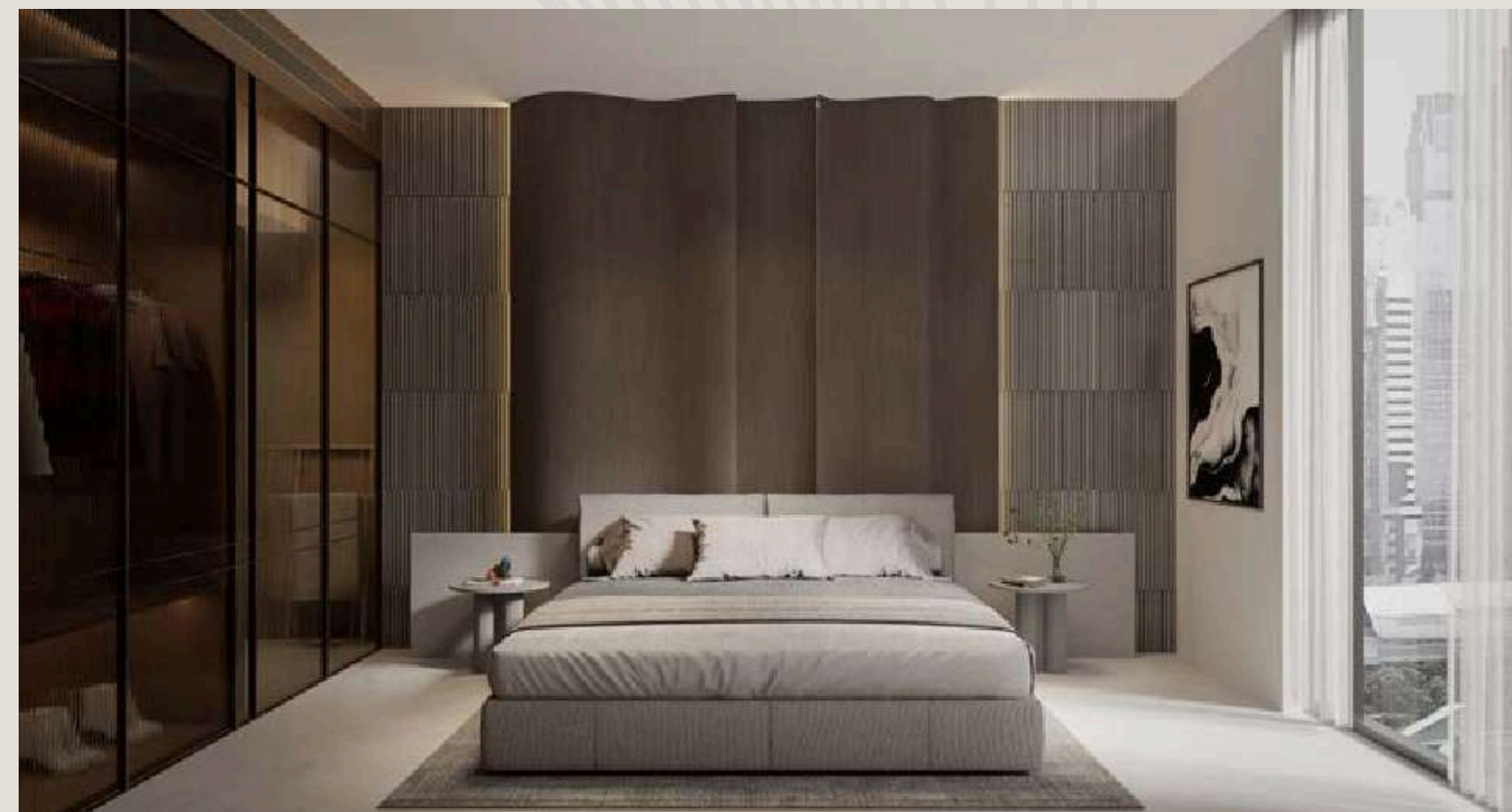
Location: Arjan, Dubai  
Status: Under Construction  
Number of Units: 381

## REFINED LIVING WITH A HUMAN TOUCH

Sleek design meshes with everyday warmth in this boutique development. Wellness is built into the light-filled spaces, thoughtful amenities, and walkable surroundings.

## UNITS TYPES & SIZES

- Studios: 371.46 - 479.75 sq.ft.
- 1 Bedroom: 606.87 - 817.63 sq.f
- 2 Bedroom: 1,089.52 - 1,632.45 sq.ft





# Havelock Heights

Location: Jumeirah Village Circle, Dubai

Status: Under Construction

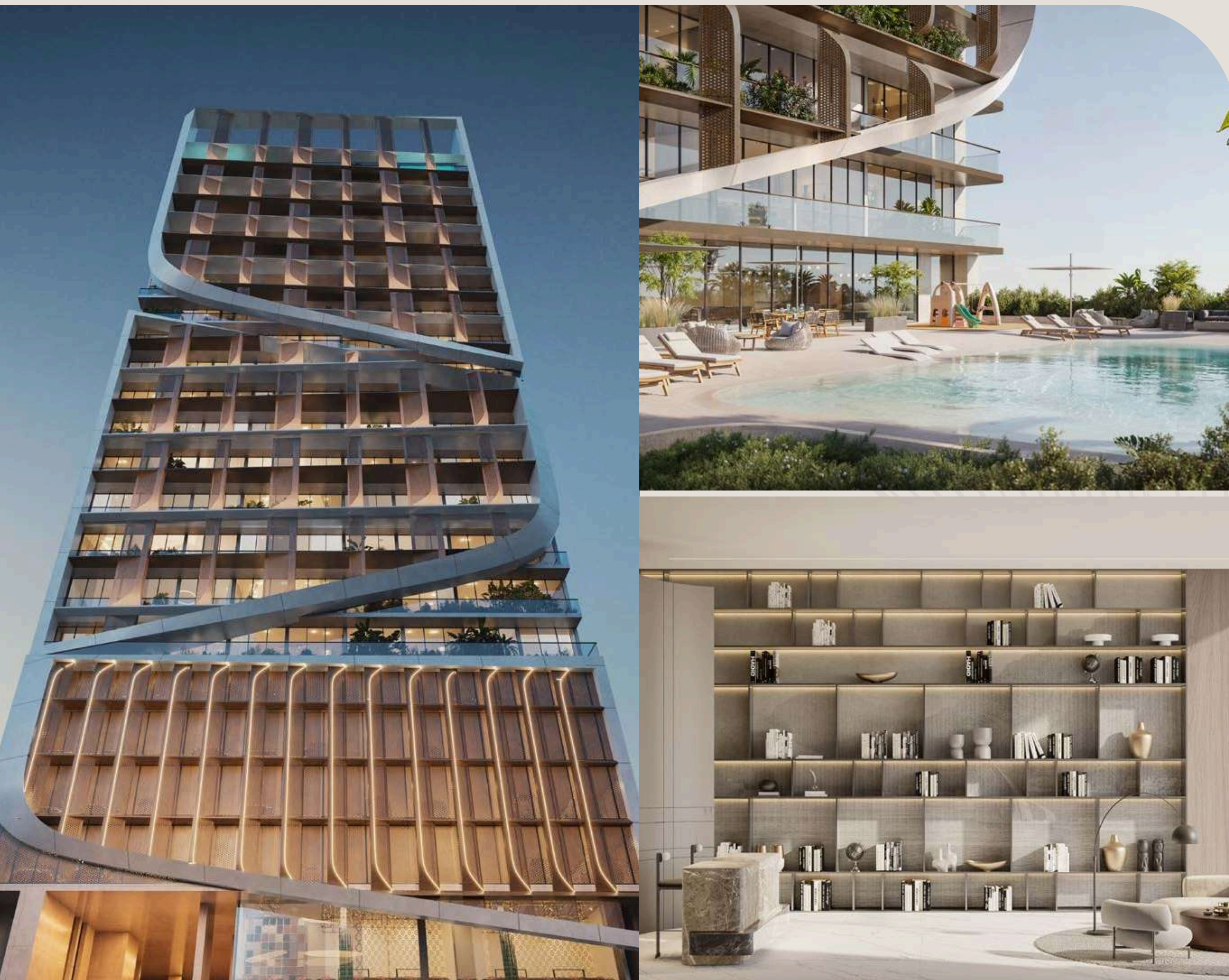
Number of Units: 156

## A FRESH TAKE ON VERTICAL LIVING

Set against wide skyline views, Havelock Heights is a high-rise living reimagined with meaningful amenities and a calm, residential energy. Great for those who love a city vibe but crave a sense of home.

## UNITS TYPES & SIZES

- Studios: 375 sqft
- 1 Bedroom: 777 sqft
- 1 Bedroom + Store: 894 sqft
- 2 Bedroom + Store: 1,122 sqft
- 2 Bedroom Premium: 1,215 sqft
- 3 Bedroom Duplex: 2,887 sqft





# Havelock Residences

Location: Discovery Gardens, Dubai

Status: Upcoming project

Number of Units: 230

## EXPERIENCE THE VIBRANT LIFESTYLE OF DUBAI

Renowned for its stunning skyline and premier shopping, the city exudes elegance.

Havelock Residences captures this essence, offering an exclusive living experience that embodies Dubai's dynamic spirit and sophisticated vibrancy.

## UNITS TYPES & SIZES

- Studios: 380 - 390 sq.ft.
- 1 Bedroom: 760 - 770 sq.ft.
- 2 Bedroom: 1050 - 1388 sq.ft.
- 3 Bedroom: 1570 sq.ft.





# Beverly Grande

Location: Motor City, Dubai  
Status: Upcoming project  
Number of Units: 296 units

## A home where nothing limits your dreams

Designed to elevate your lifestyle and ignite your ambition, this is where boundaries disappear and your future begins. It's not just walls and architecture - it's the atmosphere of power, peace and possibilities.

## UNITS TYPES & SIZES

- Studios: 411 - 675 sq.ft
- 1 Bedroom: 685 - 1143 sq.ft
- 2 Bedroom : 982 - 1744 sq.ft
- 3 Bedroom : 2093- 2096 sq.ft

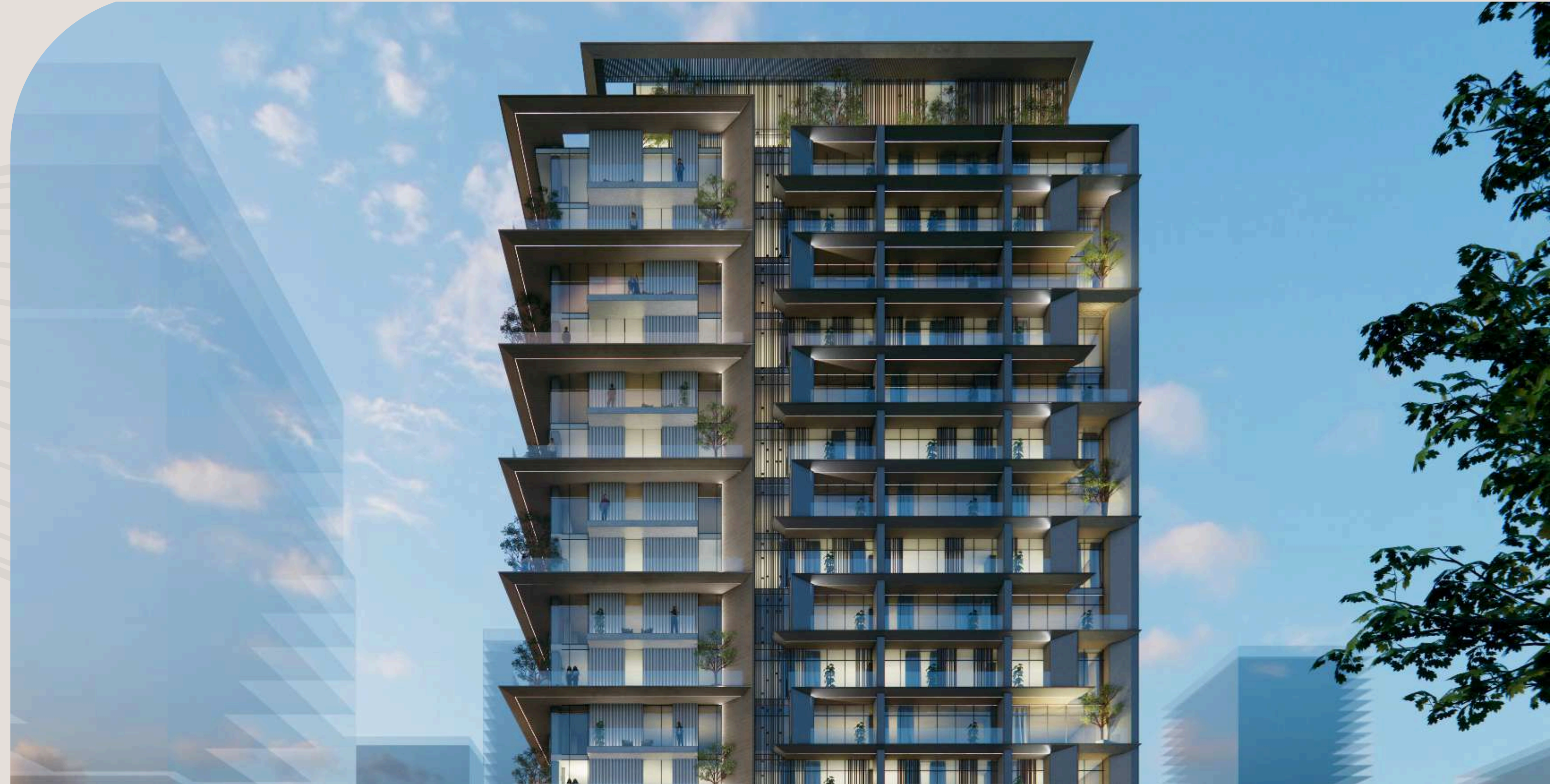




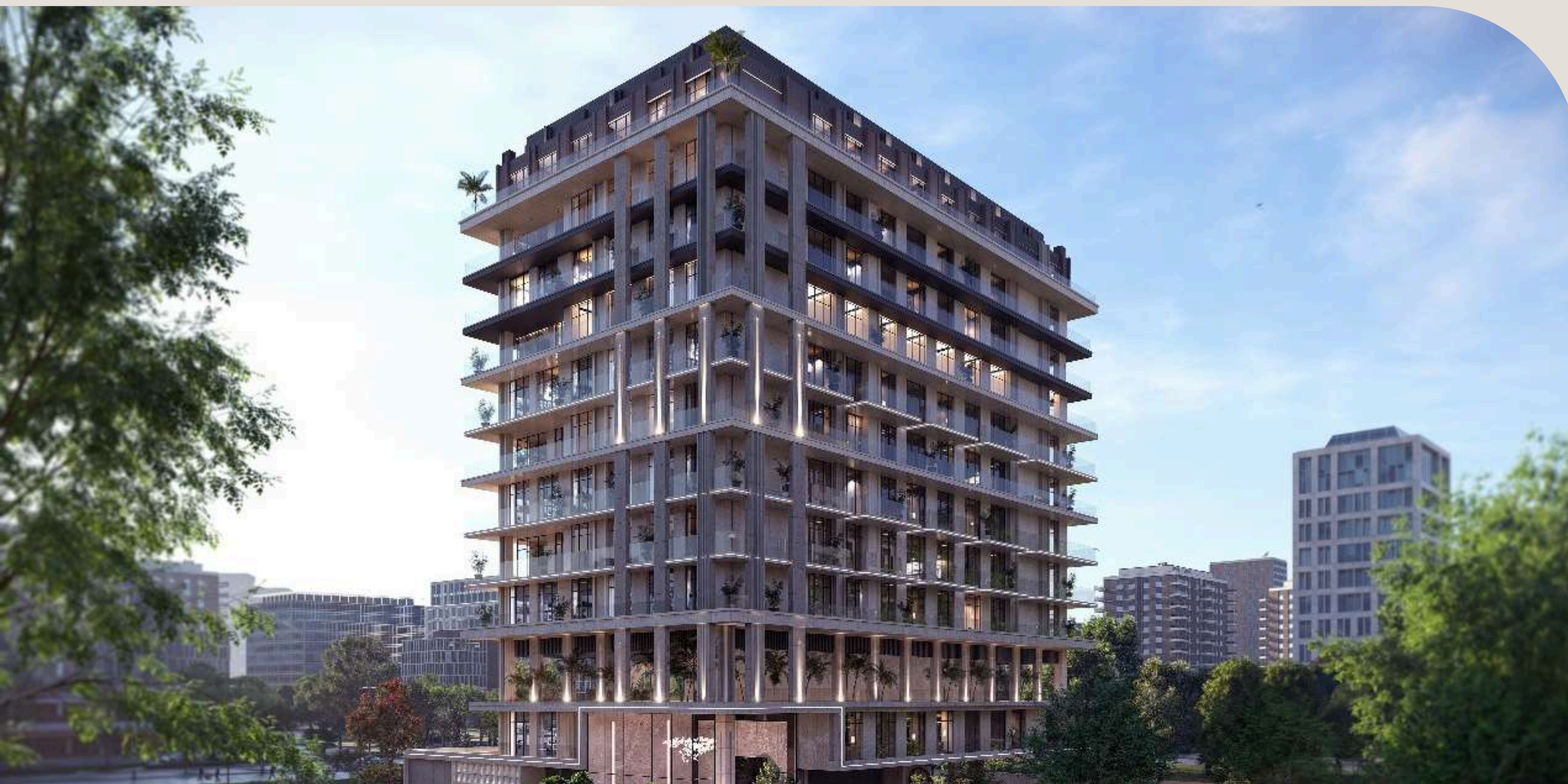
# Beverly Crown

Upcoming project

Location: Jumeirah Village Circle, Dubai  
Status: Upcoming project







# Beverly Park

Upcoming project

Location: Dubai Land  
Status: Upcoming project





# Infinity Cassa Villas

Upcoming project

Location: Dubai Hills  
Status: Under construction







# Beverly Signatures Villas

Upcoming project

Location: JVT, Dubai

Status: Under construction





**HMB HOMES**  
REAL ESTATE DEVELOPMENT

Your home - Your strength

[hmbhomes.ae](http://hmbhomes.ae)